

Date: 10-Jun-16, 15:39:06

Client: Beyond Organics

Sample: CBD Whole Cap

Type: Capsule

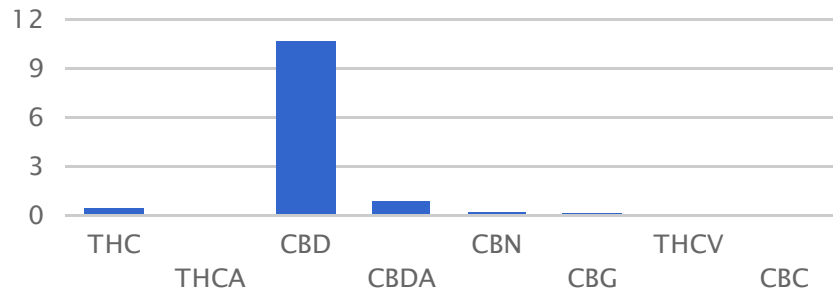
Notes:

www.TestedLabs.com

207-618-9333

(http://www.TestedLabs.com)

Cannabinoid	Result
THC	0.56 Mg / Unit
THCA	0.08 Mg / Unit
CBD	10.67 Mg / Unit
CBDA	0.95 Mg / Unit
CBN	0.23 Mg / Unit
CBG	0.16 Mg / Unit
THCV	0.11 Mg / Unit
CBC	0.1 Mg / Unit
<hr/>	
Total CBD (CBD+CBDA)	11.62 Mg / Unit
Max CBD *	11.5 Mg / Unit
Total THC (THC + THCA)	0.64 Mg / Unit
Max THC *	0.63 Mg / Unit
Total Cannabinoid Results	12.86 Mg / Unit



- TestedLabs has tested your sample on a calibrated high performance liquid chromatography (HPLC) system. This method of testing allows us to measure both the acid (raw) and neutral (decarboxylated) states of the major cannabinoids in medical cannabis flowers and products.
- Liquid sample results are reported in milligrams per milliliter (mg/ml). All other samples are reported as percent per dry weight.
- 1ml = approx 1 standard dropper full or 20 drops. 5 ml = 1 teaspoon. Please use a graduated dropper or oral syringe for accurate dosing.
- Please follow the dosage recommendations made by your medical provider.
- Heat activation of cannabis products converts THCA to THC and CBDA to CBD in a time and temperature dependent manner. THCa typically converts fully to THC at 252 Fahrenheit for 27 minutes.

* Max THC and Max CBD values represent the theoretical maximum decarboxylated cannabinoids available if product is fully heat activated. (Using the multiplier 314.468/358.471)

Reviewed by Clay Sulak _____ on 06/13/2016